

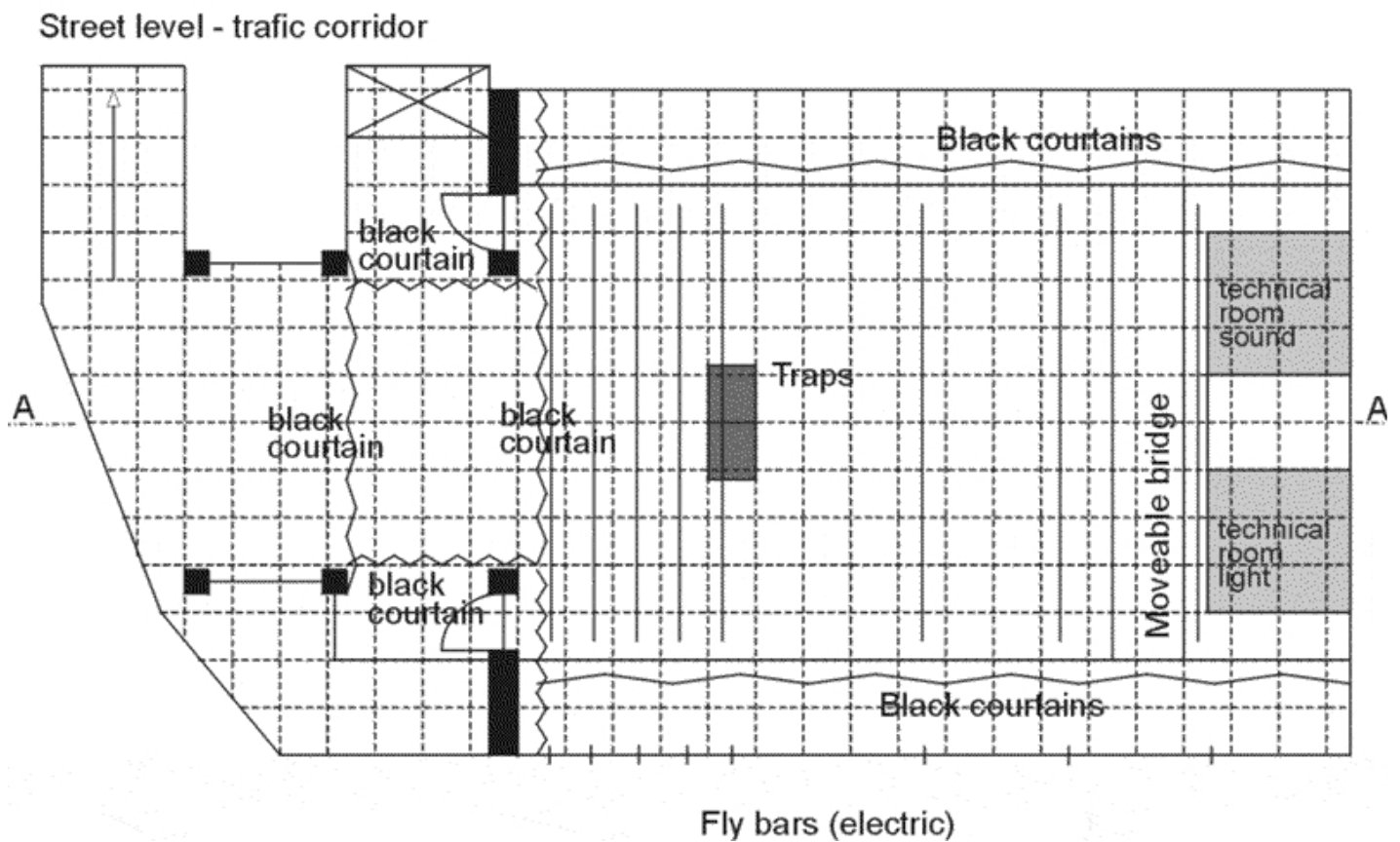
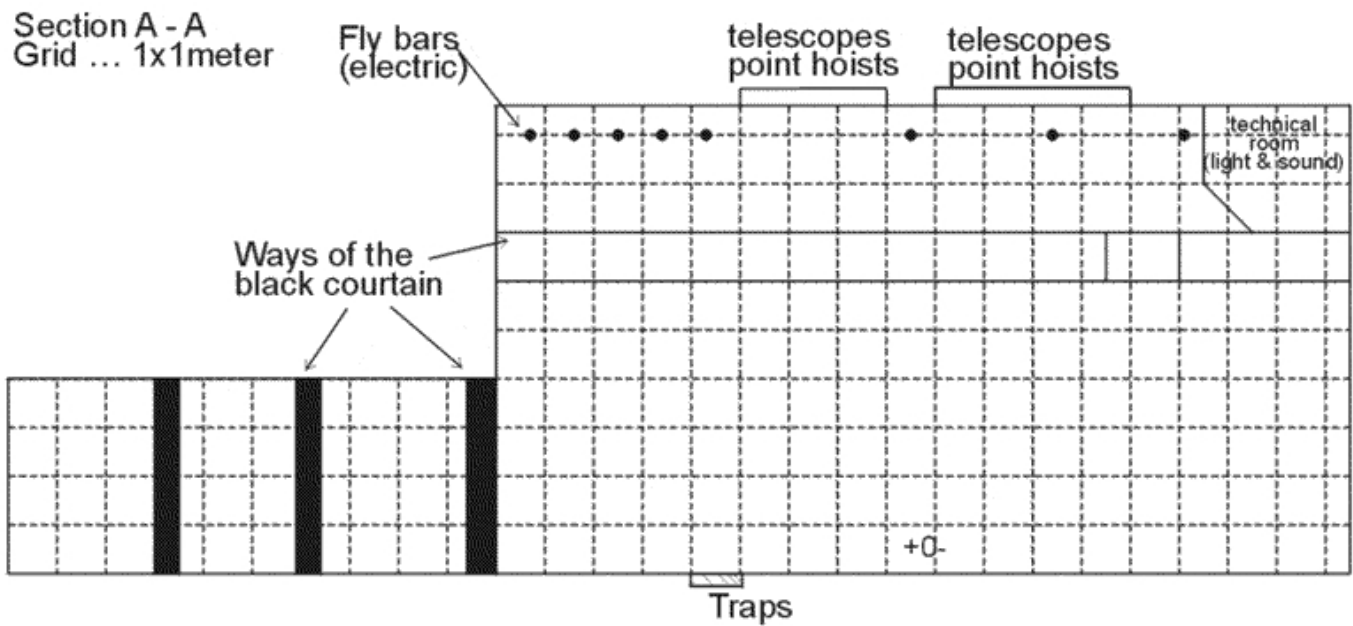
**G o o s e  
o n  
a  
S t r i n g  
T h e a t r e**

**TECHNICAL EQUIPMENT**



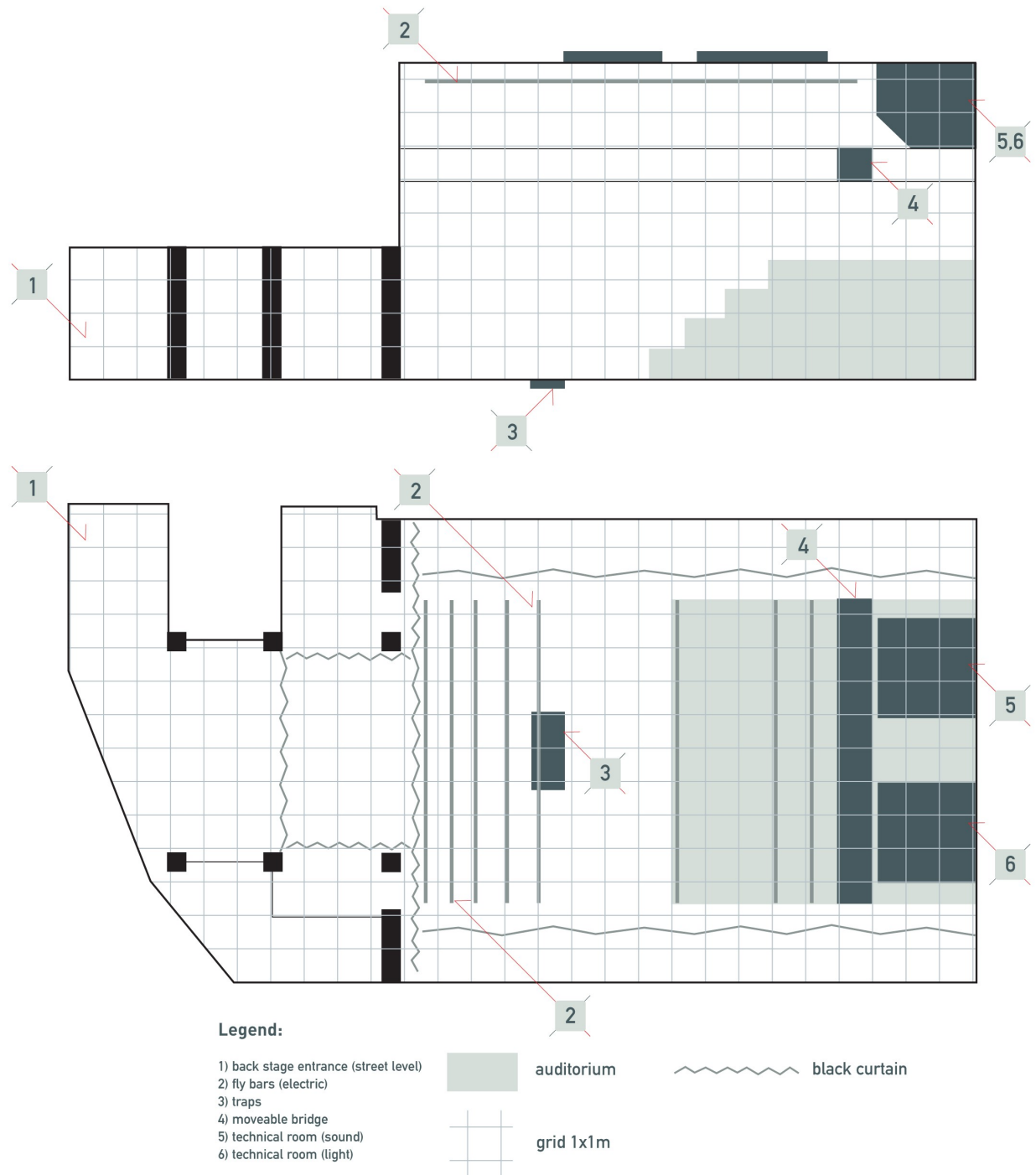
- technical drawings
- stage technologies
- sound technologies
- lighting technologies

## GREAT HALL – technical drawing no.1

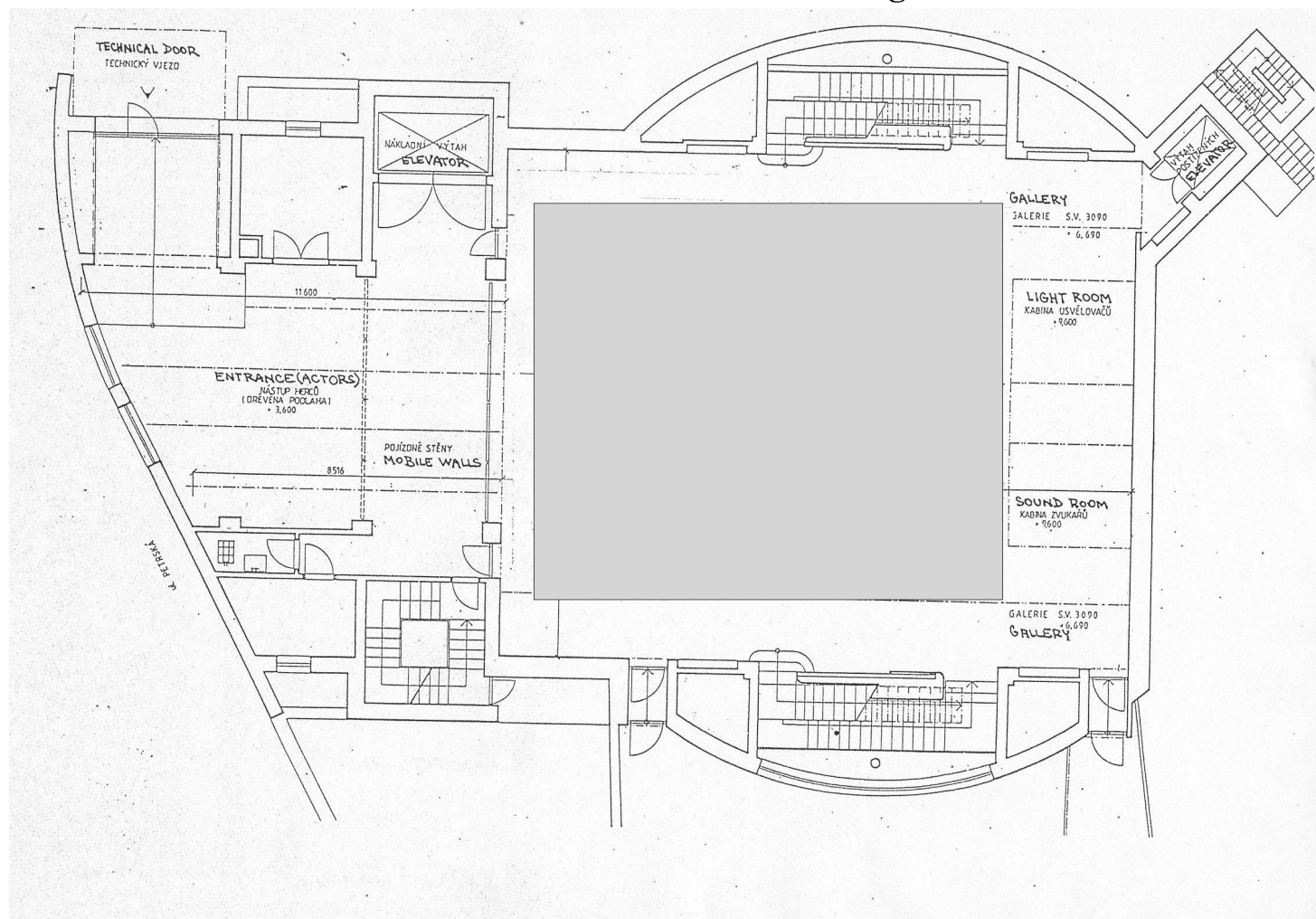


## GREAT HALL – technical drawing no.2

### THEATRE GOOSE ON THE STRING – GREAT HALL



## GREAT HALL – technical drawing no.3



### Equipped with:



#### fixed platform

- 10pcs 200x100x20 cm
- 10pcs 200x100x40 cm
- 10pcs 200x100x60 cm
- 10pcs 200x100x80 cm
- 10pcs 200x100x100 cm

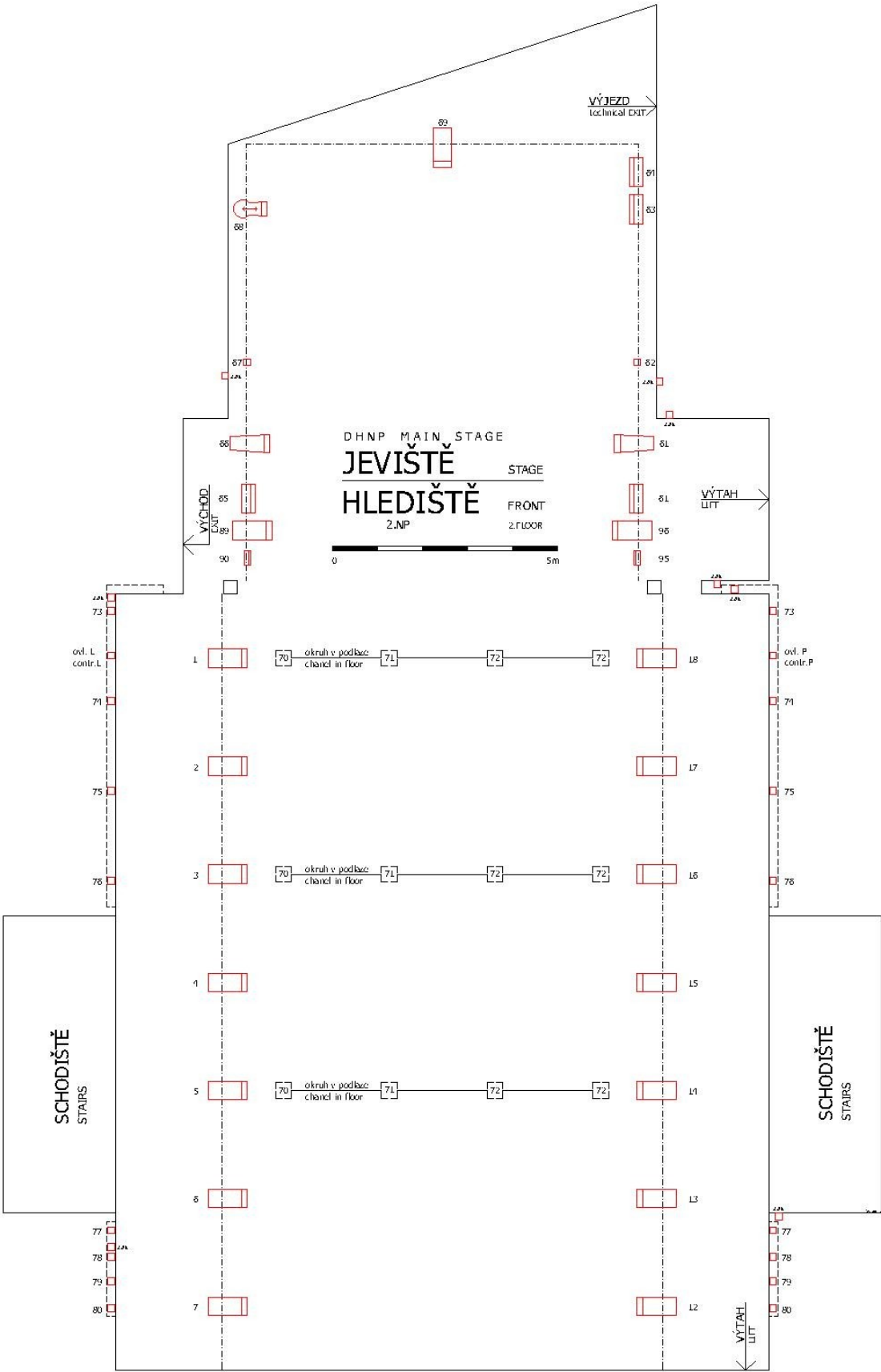
#### variable platform

115pcs 200x100x20-80 cm  
(includes elevation of the auditorium)

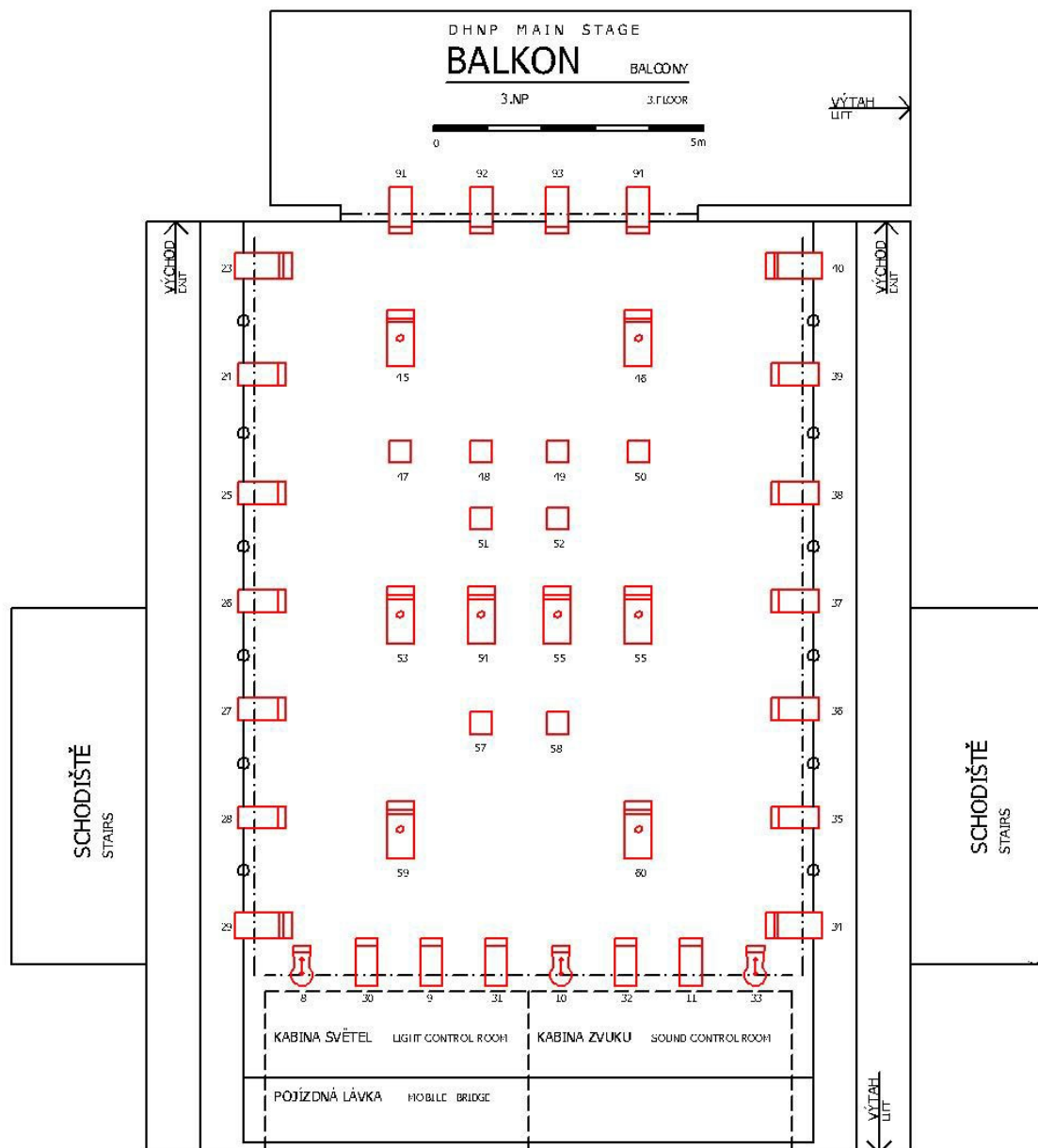




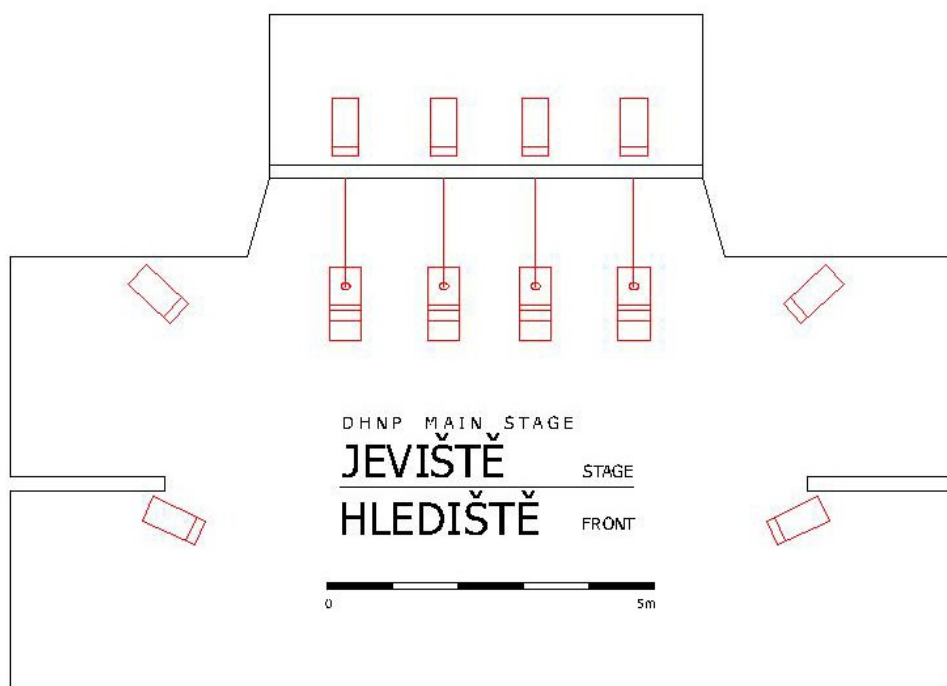
## GREAT HALL – lighting plot 1<sup>st</sup> floor







## GREAT HALL – lighting plot 2<sup>nd</sup> floor



### GREAT HALL – lighting plot no.3



### GREAT HALL - lighting plot explanatory sheet

	FHR 1000W
	FHR 2000W
	AHR 1000W
	SPOT 650W

## **GREAT HALL – lighting equipment**



**Console**  
ETC Express  
72/144



**Par 300W**  
12 pcs



**FHR (pebble convex)**  
1000 W – 36 pcs  
2000 W – 12 pcs (8 pcs on telescopes)



**Foodlight**  
AHR 1000 W – 8 pcs



**Profile spot**  
Selecon Pacific 1000 W – 5 pcs



**Profile spot**  
ETC 750 W – 2 pcs



**Followspot**  
**Selecon Chorus 1200 W – 4 pcs**



**Followspot**  
**HHR 650 W – 4 pcs**

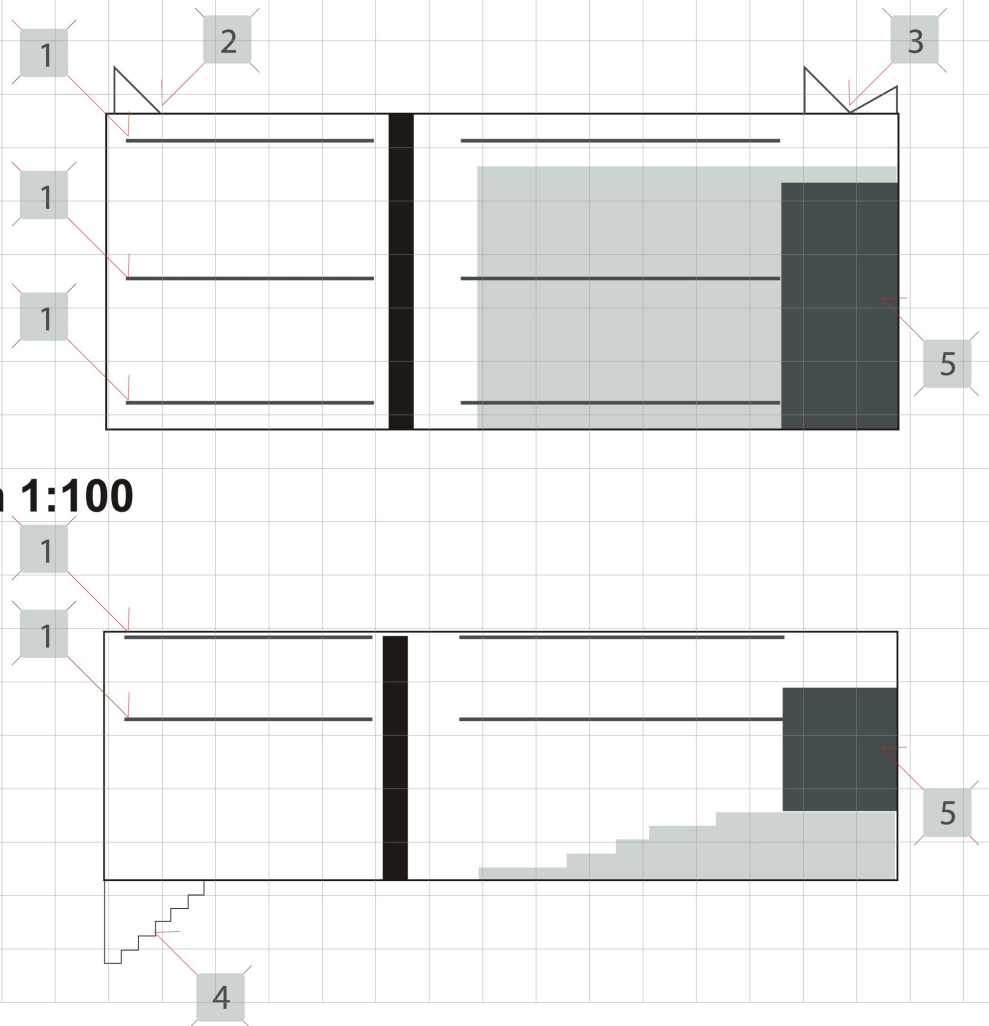
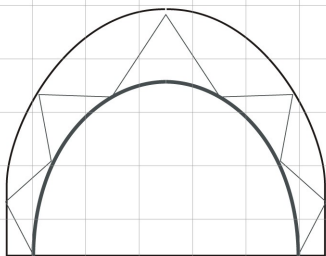
**Digital dimmer**  
**96 circuits**  
**2,3 kW**



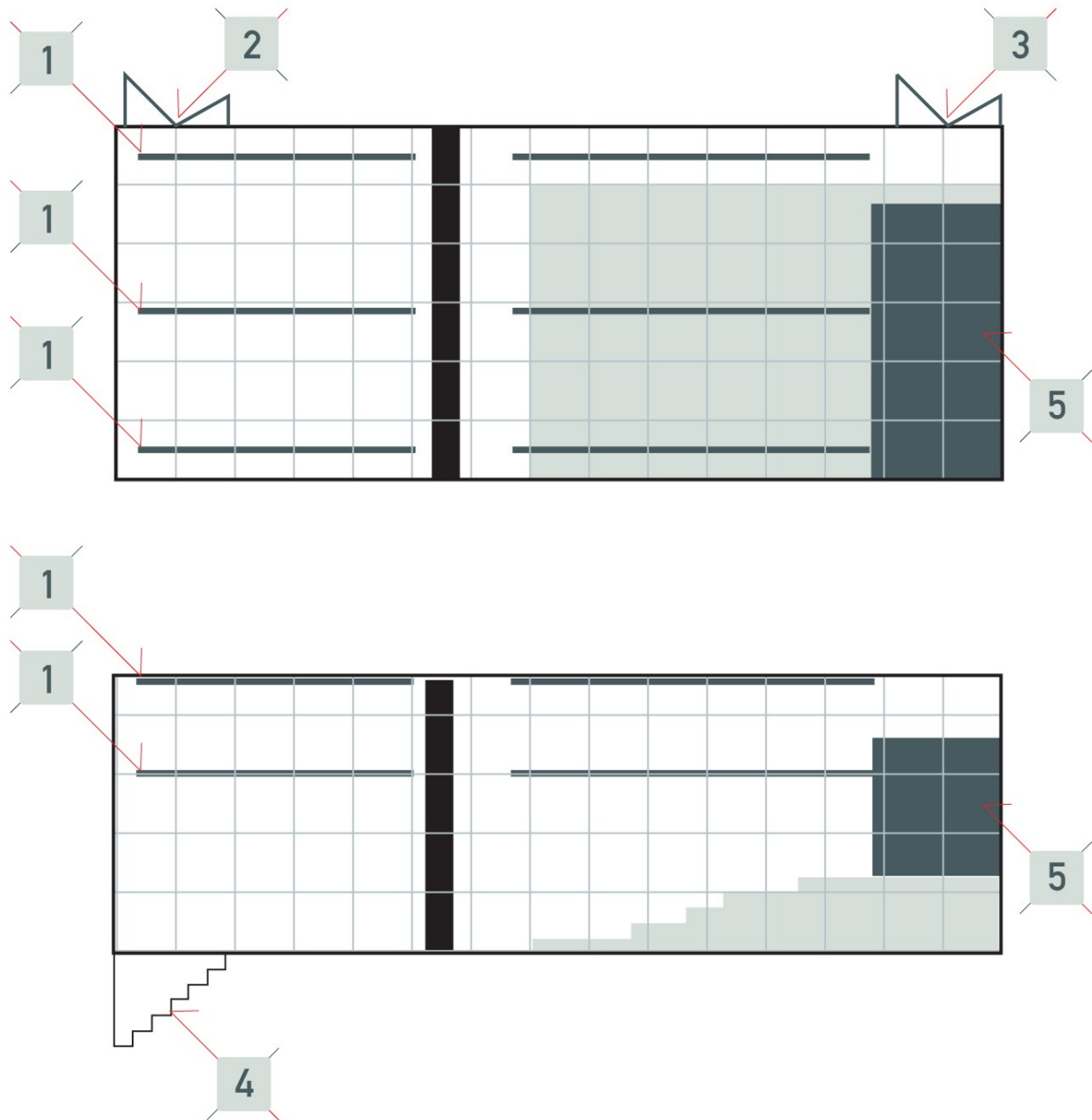
## CELLAR STAGE – technical drawing no.1

- 1 lighting grid
- 2 stage entrance
- 3 audience entrance
- 4 trap door
- 5 light and sound control
- auditorium

**CED-sklep**  
**horizontal projection 1:100**  
**side view 1:100**



## CELLAR STAGE – technical drawing no.2



### Legend:

- 1) lighting ramp
- 2) vstup na jeviště??
- 3) audience entrance
- 4) traps
- 5) technical room (sound + light)

 auditorium

 grid 1x1m

Architectural floor plan of a building, likely a school or institutional structure, showing a central corridor and several rooms. The plan includes dimensions, room numbers, and labels for various areas.

**Room Dimensions and Numbers:**

- Room 1: 590 (top left)
- Room 2: 650 (top right)
- Room 3: 565 (center)
- Room 4: 740 (bottom left)
- Room 5: 825 (bottom right)

**Labels and Notes:**

- UMYV. č. 525 S EL. OMR. EZ 4051 (top right)
- POTRUBÍ V PODHLAVÍ (top right)
- UMYV. č. 525 (middle right)
- KLOZET č. 151 (middle right)
- 3 (bottom right)
- 5 (bottom center)

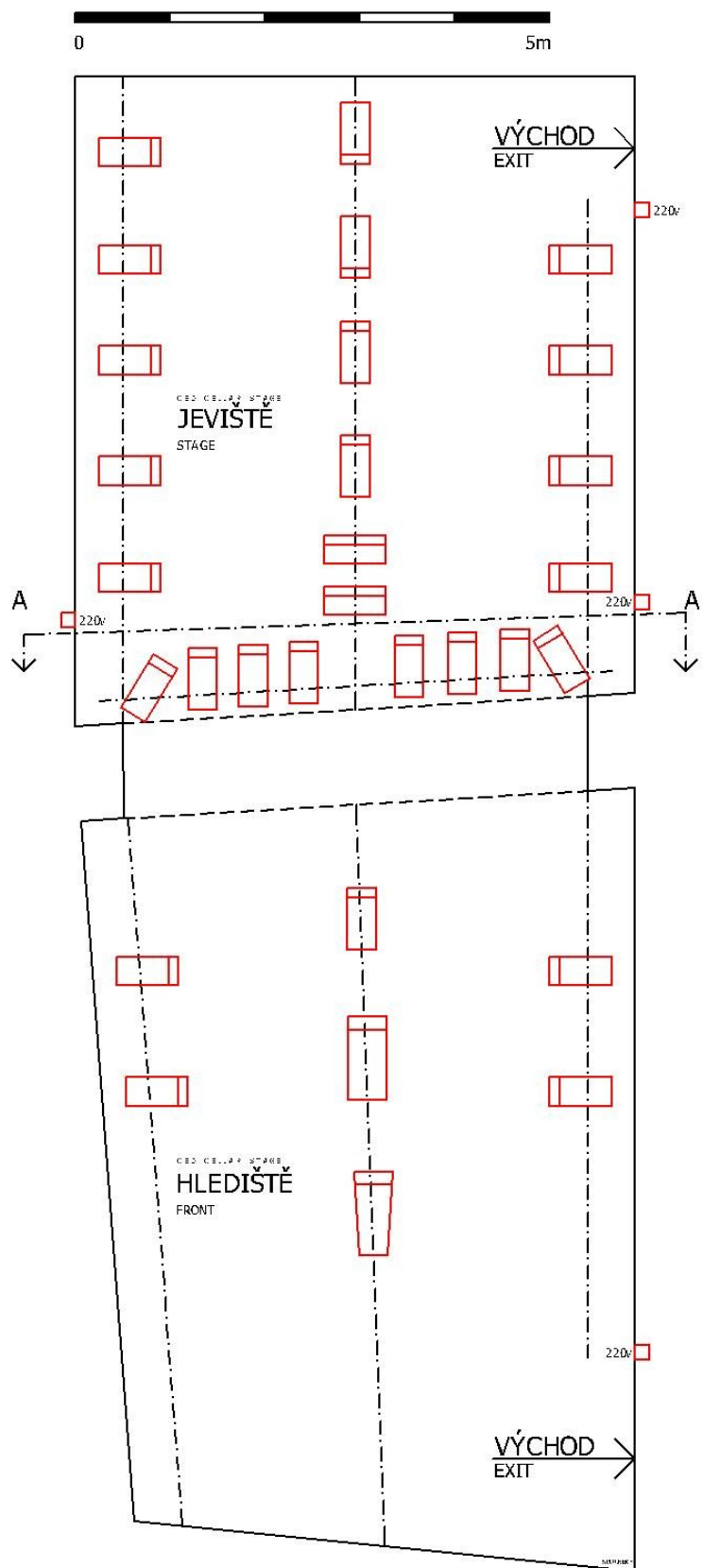
**Dimensions:**

- 685 (left side)
- 100 (center)
- 100 (center)
- 740 (bottom left)
- 825 (bottom right)

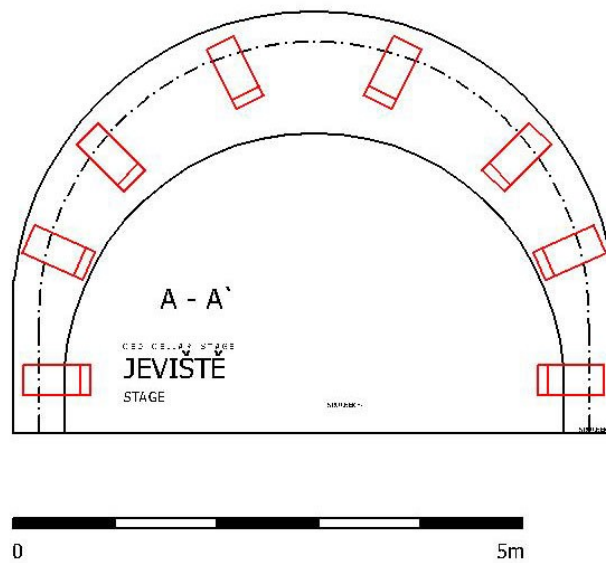
**Other Features:**

- Staircases (indicated by arrows and lines)
- Curved walls and doorways
- Room numbers 1, 2, 3, 4, 5

## CELLAR STAGE – lighting plot no.1



## CELLAR STAGE – lighting plot no.2



## CELLAR STAGE – lighting plot explanatory sheet

	FHR 500W
	FHR 1000W
	AHR 1000W
	SPOT 650W



## CELLAR STAGE – lighting equipment



**Console**  
ETC Express  
48/96



**FHR (pebble convex)**

500 W – 29 pcs

1000 W – 1 pc



**Floodlight**

AHR 1000 W – 2 pcs



**Profile spot**

650 W – 1 pc

**Digital dimmer**

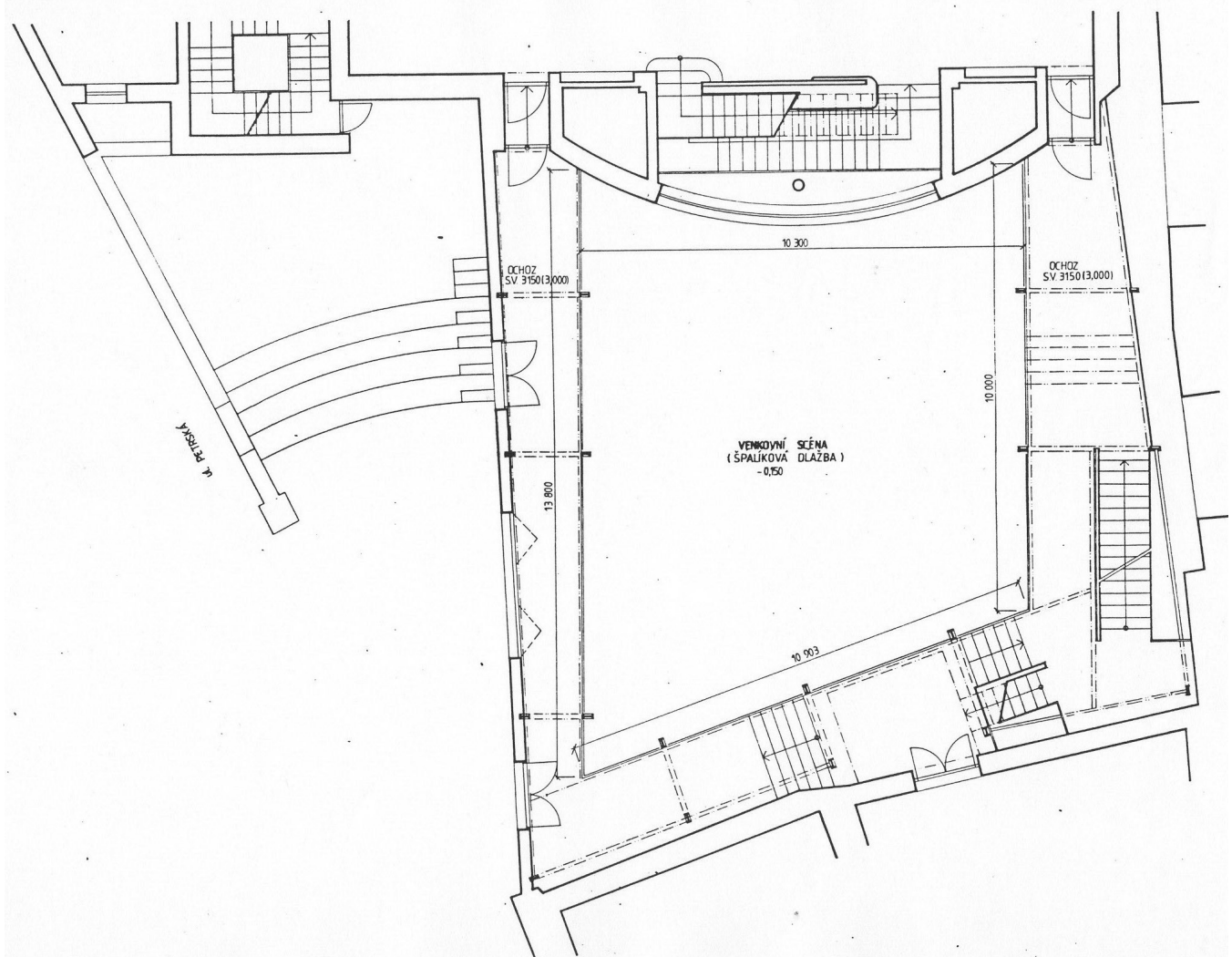
30 circuits

1,2 kW

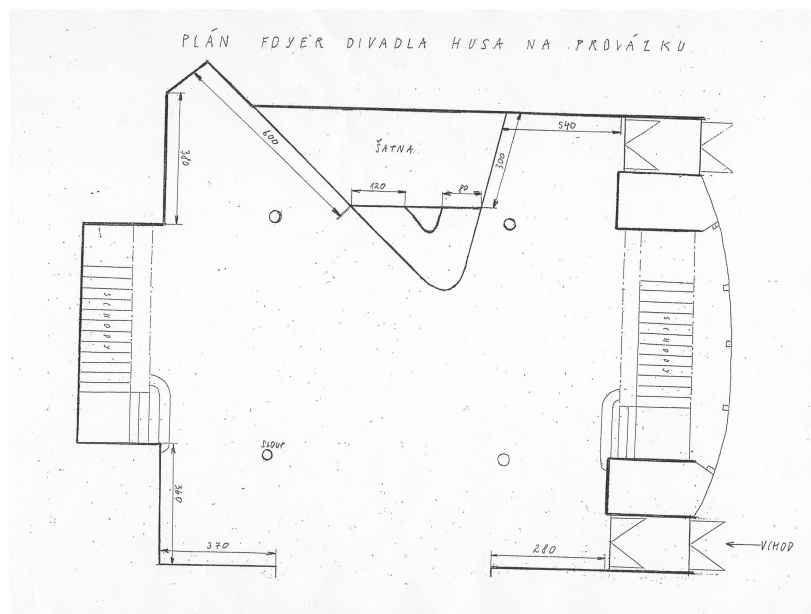
## **GREAT HALL & CELLAR STAGE – sound equipment**

		Specs		Quantity	Location
<b>PA Systems</b>	360° Cluster	4x L'acoustic 12XT	4000W	1	above the main stage (arena applications or center cluster)
	LR	2x L'acoustic 112 with SB15 SUBs	4000W	1	main stage
	monitors	BELL M12	270W	4	mobile
	monitors	BELL M15	360W	4	mobile
	sub bass	BC speakers	650W	4	above the main stage technical bridges
	Megaton 12	repro BC speakers 12" Selenium 1"	300W	2	studio
	Megaton 15	repro BC speakers 15" Selenium 1"	500W	2	basement stage
<b>Amplifiers</b>		QSC 2450	2x650W	5	main stage 4x basement stage 1x
		QSC1450	2x450W	2	main stage 1x studio 1x
		L'acoustic LA4	4x1000W	1	above the main stage technical bridges
<b>Crossover</b>		RANE		1	above the main stage technical bridges
<b>Mixing consoles</b>	Yamaha	LS9 32x IN 16x OUT 4x FX	Digital	1	main stage
	Yamaha	01v96 12xmic IN 6x OUT 2x FX	Digital	1	mobile
	Mackie	CFX 16 (with FX but not usable)	Analog	1	basement stage
	Soundcraft	Spirit 8 - 24x mic IN, 8x grp, 6x AUX,	Analog	1	
	Soundcraft	Spirit FOLIO FX8 - 8x mic IN, 3x AUX, integrated Lexicon fx	Analog	1	
<b>EQ</b>	Klark teknik	DN370		1	main stage
<b>FX</b>	Yamaha	SPX 900		1	
	Lexicon	MPX100		1	
	TC Electronic	M-One		1	
	EVENTIDE	SPACE pedal		1	
<b>Microphones</b>		Shure SM 58	XLR	4	
		Shure BETA 58	XLR	2	
		Shure BETA 57	XLR	3	
		Shure SM 57	XLR	3	
		AKG SK391	XLR	2	
		AKG SK393	XLR	2	
		AKG C1000	XLR	4	
		AKG C547 BL	XLR	1	
		Shure BETA 52	XLR	1	
		AKG D112	XLR	1	
	set for piano	DPA 4066 2pcs	microdot or XLR	1	
		Shure SH 55	XLR	2	
	headset	DPA 4088	minijack	2	
	lavalier	Sennheiser MKE2 gold	minijack	6	
		Sennheiser EW100 G3	wireless	2	
<b>Wireless system</b>		Senheisser EW300 G2		6	
		Senheisser EW100 G2		2	
<b>Players</b>	MD	SONY E-10		2	
	CD			1	
	HDD	DENON DN-HD 2500		1	
<b>Stands</b>	K&M	mic stand	boom	6	
	Manfrotto	mic stand	straight	2	
		desk stand		2	
	Proel	speaker stand	1, 8 m	2	
		speaker stand with handle	2, 1 m	2	
<b>Multitransfer cables</b>	Zeck	20x In 8X OUT	30m	1	
	Zeck	16x IN 4x OUT	15m	1	
<b>Video</b>	NEC Np 2200	4200 Ansi Lens shift		1	

## ELIZABETHAN STAGE – technical drawing

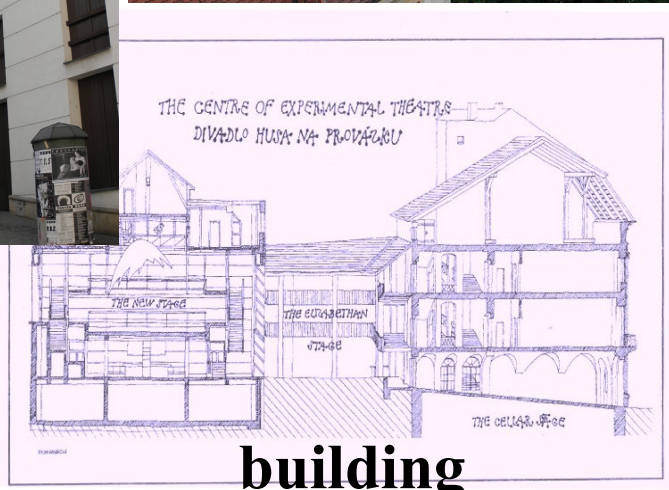


## FOYER – technical drawing





## PHOTO DOCUMENTATION



building







great hall







cellar stage



elizabethan stage



foyer